



Established 1877 — Over 125 Years of Educational Success

Governing Board Members

Mr. Matthew Balzarini, President ~ Mr. Shane Nielson, Clerk ~ Mrs. Yolanda Salsedo ~ Dr. Chris Cunningham ~ Dr. Atul Khanna

DISTRICT UPDATE

10/07/08

Dear Parents and Community Members,



The 2008-2009 school year is off to a great start. I want to thank all staff, parents, and community members who have made me feel welcome in this great District. It is plain to see why so many families have chosen to move to our District. I hear a common theme when talking with parents; we want to maintain the personal touch and strong traditional values established in the Lammersville Elementary School District. We also want the District to prepare our children for high school and beyond. The Lammersville Elementary School District continues to experience an increase in our student population: Bethany = 803, Lammersville = 282 and Wicklund = 645. We have three very active school Foundations who are planning several events to support each school. Please contact the school where your child attends to obtain information on how to get in touch with our Foundation presidents.

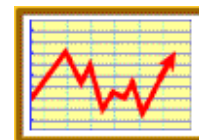


In an effort to improve communications between our school and parents, the District has purchased an auto dialer system that can contact home phones, cell phones, and e-mail addresses in a very short time. We will use this system to notify you of coming events, student activities, and keep you informed if we have an emergency. All sites have tested the communication system by sending out a message. If you have not received a contact, please notify your school site office to verify that your contact information we have on file is correct.

Two major decisions facing the Lammersville ESD in the near future are: 1) preparing for an increasing student population by planning for future school sites and 2) Unification of the District to build our own High School.

Preparing for Growth: The

Lammersville ESD has recently submitted plans for Sebastian Questa Elementary School to the California Department of Education. When approved, this will allow our District to be placed on a list to receive matching funds from the State School Construction Bond. This project will only be started when there is funding and the student population has increased to warrant a new school site.



Plans for the Altamont Elementary School will be developed after the District receives the matching funds from the State for the completion on Bethany Elementary School. Local taxes for Wicklund, Bethany, and Altamont Schools are all tied together in an agreement to build all three campuses. The reimbursement has been delayed due to an appeal with the State Allocation Board (SAB). Hopefully this will be finalized at the SAB meeting at the end of October.

Unification: The Lammersville ESD has completed a study on the Feasibility of Unification and presented this study to the Tracy Unified School Board in June.

The study concluded that a proposed unification of the Lammersville ESD meets or exceeds all of the State criteria for unification. Tracy Unified is in the process of conducting their own study to evaluate the impact of the LESD unification to their District. The Lammersville Governing School Board will proceed with the unification process and continue to evaluate student population projections and financial analysis of the cost of a new high school.



For information about our school sites activities, school board meeting dates and agendas, and district contacts, please visit our web site:
<http://www.lammersvilleschooldistrict.net>.



Please feel free to contact me at (209) 836-7400 or via e-mail at dhansen@sjcoe.net if you have questions.



Sincerely,
Dale H. Hansen, Superintendent

Days: Every Tuesday and Thursday evening from October 2008– May 2009

Place: Wicklund School, 300 Legacy Drive, Mountain House

****Free Childcare provided****

Call Debbie Burnette at 209-836-7400 for more information

COMMUNITY-BASED ENGLISH TUTORING PROGRAM

The Community-Based English Tutoring (CBET) program is part of the Lammersville School District's Educational services. The CBET program was supported when Senate Bill (SB) 368 was passed by the legislature in August 2006. The intent of Bill (SB) 368 is to provide free or subsidized programs of adult English language instruction to parents or other members of the community who in turn pledge to provide personal English language tutoring to English learners in kindergarten through grade twelve (K-12). Within the text of SB 368 are two significant declarations:

**The more a parent or guardian is involved in the education of his or her child, the better the child will perform in school.*

Education Code (EC) Section 316.5

(a)(1)

**English language proficiency is critical to academic success. EC Section 316.5 (a)(2)*



Additional provisions of SB 368 require that CBET programs include local school board approval and that there will be a pre and post assessment for adult participants in the program. This is a wonderful opportunity for all parents of English Language Learners.

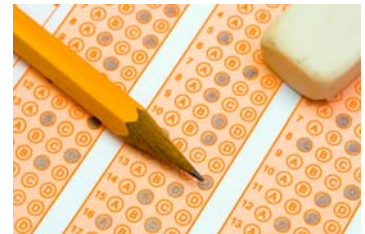
Start Date: Tuesday, October 7, 2008

Time: 7:00PM-9:00PM

ASSESSMENT AND ACCOUNTABILITY

The use of standards and benchmarks coupled with meaningful assessments help drive the instruction and achievement of our students in the Lammersville Elementary School District.

Our three schools participate in the State Testing and Assessment program (STAR) and the scores continue to reflect high achievement.



The STAR program consists of the California Content Standards Test taken by students in grades 2-8 and the CAT-6 Standardized Test taken by students in grades 3 and 7.

Along with state mandated assessments, Lammersville Elementary School District uses important K-5 English language arts assessments, implements a trimester writing assessment program where every student writes to a district wide prompt three times a year, and has developed a district mathematics assessment to help increase consistency across the district in our standards-based math courses. Classroom assessments drive instructional decisions on an on-going basis while the statewide assessments give us an indication of annual progress in many areas. For more information regarding assessment-related questions, please contact Debbie Burnette at 209-836-7400.