



Wicklund Times

September 11, 2009
Volume 4, Issue 1

300 Legacy Drive
Mountain House, Ca 95391
(209) 836-7200 office / (209) 830-6716 fax

Lemuel Vergara, Principal
Debbie Wingo, Vice Principal

Principals Pen

Welcome back to another school year here at Wicklund School. The staff and I are very excited **about the start of school and are truly happy to see all of your children's smiling faces!**

As with each new school year, there comes about many changes. Our most notable changes come in staffing. We are welcoming back Mrs. McGehee who is teaming up with Mrs. Hansen in 1st grade. In PE, we welcome Mrs. Morales and Mr. Herron to our staff. At the middle school, Mr. Fee joins us in the 6th grade and Mrs. Maslyar joins us in the 8th grade. In this short time, their presence on campus has been positive and we are excited to have them all as part of the Wicklund Family.

I was very pleased with the turn-out at Back-to-School Night. It was nice to re-connect with a **lot of you and to meet some of you for the first time. The one thing that is vital to your child's success here at Wicklund is the relationship built between you and your child's teacher. If you can establish and nurture an "open-line" of communication with each other, I believe that our support for our students will be informed and solid.** As I have stated many times, it takes the entire educational community to help ensure our students are successful.

One thing to note are the changes in the parking lot. To help move traffic along and ensure safety, the curbs are either painted red or yellow. Red is a not stopping or parking zone. Yellow is loading. You will have three (3) minutes to pick up your child from this area. If it takes longer, then you are expected to vacate that spot for someone who is ready to load their child. Your cooperation in this matter is much appreciated and aids greatly in ensuring the smooth and safe dismissal of our children.

And, as always, our main focus here at Wicklund will be the individual academic achievement of each student. Our goal is provide your child with a high quality education that helps them reach their potential, while maintaining the high standards of the Lammersville School District.

Again, welcome to another school year. As always, my door is open should you have a question, concern, or just want to talk.

Sincerely,

Lemuel A. Vergara

Please call the attendance line to report **your child's absence** (209) 836-7201
School Office Hours
Monday—Friday
7:30 a.m.-4:00 p.m.

Calendar	
Picture Day	9/16
8th Grade Information Meeting, room 316 @ 6:30 pm	9/24
No-school Staff Development	9/25
Carnival Prize Donations Due	9/28
"Recycle Our Way to Science Camp" donations due	10/2
4th Annual Carnival, Wicklund School, 11am-4pm	10/10
Dinner Night Out	10/15
Kindergarten & 1st Grade Music Concert@ 6:30 pm	11/4

Picture Day



REMEMBER! Picture Day is

Wednesday, September 16th



Special Education Parent Input Meeting

Lammersville Elementary School District invites you to a meeting for parents and guardians of special education students. This will be a chance for you to tell us about the special education services your child has had. We are also interested in learning about your child's experiences in the programs the school district provides. We would like to hear about what you think works and what areas could be made better.

The parent or guardian meeting is an important part of the California Department of Education's Special Education Self Review process for school districts. It is one way that school districts can examine their compliance with the law as stated in the Individuals with Disabilities Education Act (IDEA). This meeting is designed to gain as much information as possible from parents and guardians about key areas in the district's implementation of IDEA.

Where: The Parent or Guardian Input Meeting will take place at:

*Lammersville School District Board Room (on the Wicklund campus)
300 Legacy Drive
Mountain House, CA 95391*

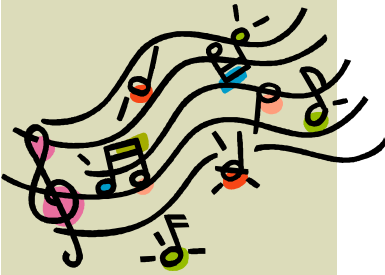
When: *September 17 (Thursday), 2009*

Time: *From 6:30 p.m. to 7:30 p.m.*

The meeting site is physically accessible to individuals with disabilities. If you are in need of further accommodations in order to participate (for example: assistive listening devices, materials in an alternate format, or translation if English is not your primary language) please contact Debbie Burnette at 836-7400 Ext 2319 by September 9, 2009. We will make every attempt to provide accommodations, but cannot guarantee that we will be successful.

We genuinely look forward to meeting with you and listening to your comments about the special education programs and services provided by your school district.

Debbie Burnette
Assistant Superintendent of Educational Services
Lammersville School District
209-836-7400 Ext. 2319



Music Notes

The Wicklund Music Department is off to a healthy start this school year, with all Kindergarten through 4th grade students attending General Music classes, and ninety-eight 5th – 8th graders playing in 5 Music Ensembles. Here is a list of all of the Music Department Concerts for the 2009-2010 school year. All performances will take place in the Wicklund Multi-Use Room.

Wednesday, November 4th, 6:30 PM:
Kindergarten and 1st Grade General Music Concert

Wednesday, December 9, 2009, 6:30 PM (*NEW TIME*):
Choir, Band and Orchestra Winter Concert

Tuesday, March 9, 2010, 6:30 PM:
2nd and 3rd Grade General Music Concert

Tuesday, April 13, 2010, 6:30 PM:
4th grade General Music Concert

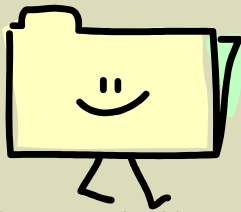
Tuesday, May 11, 2010, 6:30 PM (*NEW TIME*):
Choir, Band and Orchestra Spring Concert

Be sure to write all of these performances on your calendar. The younger students are not able to hear the older students play their concert music at the end of each semester,

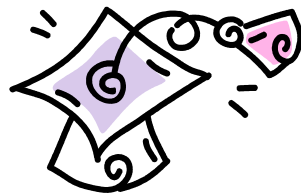
so you and your child may want to attend one of the Choir, Band and Orchestra Concerts in the evening. As always, I am so privileged to be able to work with a majority of the student body here at Wicklund.

Thank you for supporting your **child's involvement in Arts Education**. I look forward to seeing you at the concerts this year!

*Cathy Robertson,
Wicklund Music Director*



Planners and Folders are still available for purchase. Planners are \$5 and Folders are \$1. Purchases can be made through your student's teacher.



8th grade promotion information meeting on

September 24th
6:30 p.m.
Room 316

Traci L Mitchell, 209-836-7200, ext 2139

MzMitchell8th.net

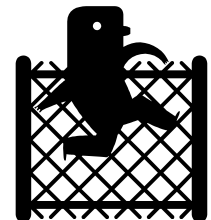
Gate Change



If you enter the Wicklund campus from the fire road between Wicklund

and the park, we've changed the gate on you! The sliding gate adjacent to the primary playground is now locked. Instead, please enter through the gate located at the east end of the 600 buildings.

Please remind your children not to squeeze through or climb over the fence!



Parking Lot Changes

As you may have noticed, large areas of the curb along the southern side of the school parking lot are now painted yellow. This is designated as a drop off and pick up zone only. You may park in this area for no more than three minutes to load or unload your children and you must remain with your car the entire time. If you park in a designated parking space, please remember that children must be escorted to their cars by an adult. Red curbs are strictly enforced no parking zones.



C
A
R
N
I
V
A
L

Are you ready to have fun? Get excited and get in motion, Wicklunds' 4th

Annual Carnival is coming soon! Just one of the many areas that we have at our carnival is a prize room where kids can redeem their prize tickets. In order to make our prize room a success, we are asking that each parent donate a few new or gently used items. A good source for these items to be purchased is stores such as The .99 cent store, Dollar Tree, Big Lots, OrientalTrading.com...

PLEASE BRING YOUR ITEMS TO YOUR TEACHER NO LATER THAN

MONDAY, SEPTEMBER 28TH

The more prizes, the better the prize room!

WSF NOW HAS A WEB SITE

www.wicklundschoolfoundation.org

WSF PRESIDENT

*“When
someone does
something
good, applaud!
You will make
two people
happy.”*

—Samuel Goldwyn

Welcome Back. By now most of us have fallen into a routine of the school year, lunches, homework, and earlier bed times. Before I start talking too much about this school year, I wanted to touch on one item from last year. Most of you might remember our Walmart Plastic Bag Recycling Program. Well, in June we received the results and WOW am I proud of our school. We earned 2nd place in our Region, which earned us an additional \$2, 000. on top of the more than \$1,200. we made from the bags themselves. Thank you to everyone who piled those bags up in their garages and drug them into the school. That was the good news.

Unfortunately, Walmart has discontinued this program. Sorry to anyone who has been saving bags over the summer. Be sure to either take them to your local grocery store or you can recycle them in your regular recycle bins.

Onto this school year. There are so many exciting things happening.

First, I am so excited to announce that we now have a website. You can find information on our events, contacts for volunteering and so much more by going to www.wicklundschoolfoundation.org.

Thanks to Heather Lamb for her hard work setting up and maintaining the site. This has been a long time coming and we are so excited.

Please take a look. You might also have noticed that some of our e-mail messages look a little different. You might see some of our e-mails coming from **“Parent Express Announcement”**. This is a new feature of our volunteer software.

Please don’t think it is spam and delete it. This is just a more flashy way for us to send you information.

Finally, October 10th is our 4th Annual Carnival. It will be held at Wicklund this year from 11:00am – 4:00pm. Be on the lookout for Pre-order fliers for both tickets and for Texas Roadhouse. We are looking forward to another fun time and hope you will join us by attending or volunteering (or both!)

Be sure to look over this newsletter for more information on our upcoming events. Thank you as always for your continued support of our organization and in turn, our children.

Bernie Hill
WSF President



Safeway will be donating 10% of your grocery purchases of participating products to Wicklund School every time you shop

August 12th through September 15th.

Look for the Yellow School Bus and purchase participating products. 10% of your purchase price will support Wicklund school when you use your Safeway Club Card

If you haven't already registered your Safeway Club Card with eScrip, be sure to visit www.backtoschools.escrip.com and select "Wicklund Elementary School."

Remember the top 200 groups earn an additional \$1,000.!



Last week to shop 10% goes Back to Wicklund

DELL'OSO Family Farm

This Halloween season, visit the area's best corn maze, pumpkin patch and Halloween destination. Get lost in the pumpkin maze, visit the haunted house or let your kids jump and play in Kiddieland.

Pre-order your tickets through Wicklund School Foundation for a guaranteed fun-filled day.

Dell'Oso is generously donating 20% of each ticket sale to Wicklund School Foundation and you won't have to stand in line!

Visit www.pumpkinmaze.com to see all the exciting activities Dell'Oso has to offer.



Recycle Our Way to Science Camp

Join the Wicklund 6th Graders as they "**Recycle Our Way to Science Camp.**"

Encourage your neighbors, friends and relatives to participate in the recycling challenge, by donating their plastic water bottles to Wicklund!

Please collect all plastic water type bottles in trash bags and bring them to school on Friday, October 2nd.

1:30 pm to 3:00 pm

It is a win for the environment and for our future 6th Grade Scientists.

Contacts:

Michelle Najour at 209-833-3894
mmnajour@yahoo.com

Ginny Clements at 209-836-8762
gandc2@comcast.net.

Dinner Night Out

Diner Night Out at Rubio's Fresh Mexican Grill, Thursday, October 15th. Whether you eat at Rubio's, take food to go, or pick up a catering order, Rubio's will donate 20% of your transaction to Wicklund School Foundation. In order for WSF to receive credit, you must present a flyer (to be distributed the first week of (October)). Stop in for a taste of Baja and help raise money for WSF!

Rubio's Fresh Mexican Grill
2431 N. Naglee Road, Tracy
www.rubios.com